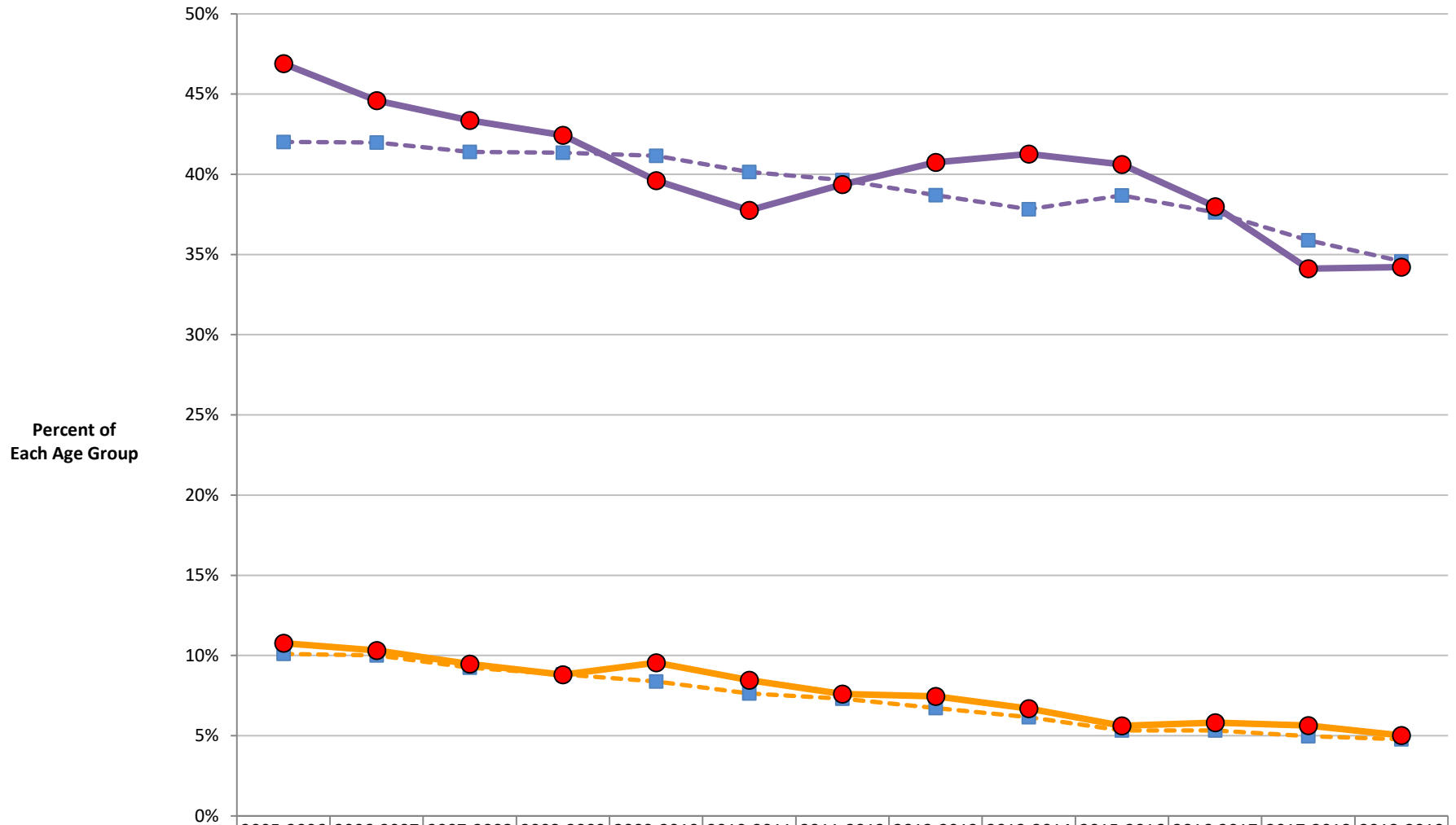


Past Month Binge Alcohol Use among Missouri and U.S. Youth and Young Adults



	2005-2006	2006-2007	2007-2008	2008-2009	2009-2010	2010-2011	2011-2012	2012-2013	2013-2014	2015-2016	2016-2017	2017-2018	2018-2019
U.S. Ages 12-17	10.10%	10.00%	9.25%	8.82%	8.38%	7.63%	7.31%	6.73%	6.16%	5.33%	5.33%	4.97%	4.78%
Missouri Ages 12-17	10.77%	10.31%	9.47%	8.80%	9.55%	8.46%	7.60%	7.46%	6.70%	5.62%	5.82%	5.64%	5.02%
U.S. Ages 18-25	42.02%	41.99%	41.40%	41.35%	41.15%	40.15%	39.65%	38.70%	37.82%	38.69%	37.62%	35.89%	34.58%
Missouri Ages 18-25	46.90%	44.60%	43.37%	42.44%	39.61%	37.75%	39.37%	40.74%	41.27%	40.61%	37.98%	34.12%	34.22%

Title Past Month Binge Alcohol Use among Missouri and U.S. Youth and Young Adults

Definition 5 or more drinks on the same occasion on at least one day during the one-month period preceding the survey

Methodology Overlapping 2-year rate estimates from Missouri and U.S. survey samples for age groups 12-17 and 18-25

Data Source National Survey on Drug Use and Health, U.S. Department of Health and Human Services, Substance Abuse and Mental Health Services Administration

Data Notes Data are not available for combined years 2014-2015 because measure was not included in the 2015 NSDUH questionnaire.
Apparent U.S. and Missouri differences in estimates, and year-to-year increases and decreases, might be statistically insignificant due to survey sampling.