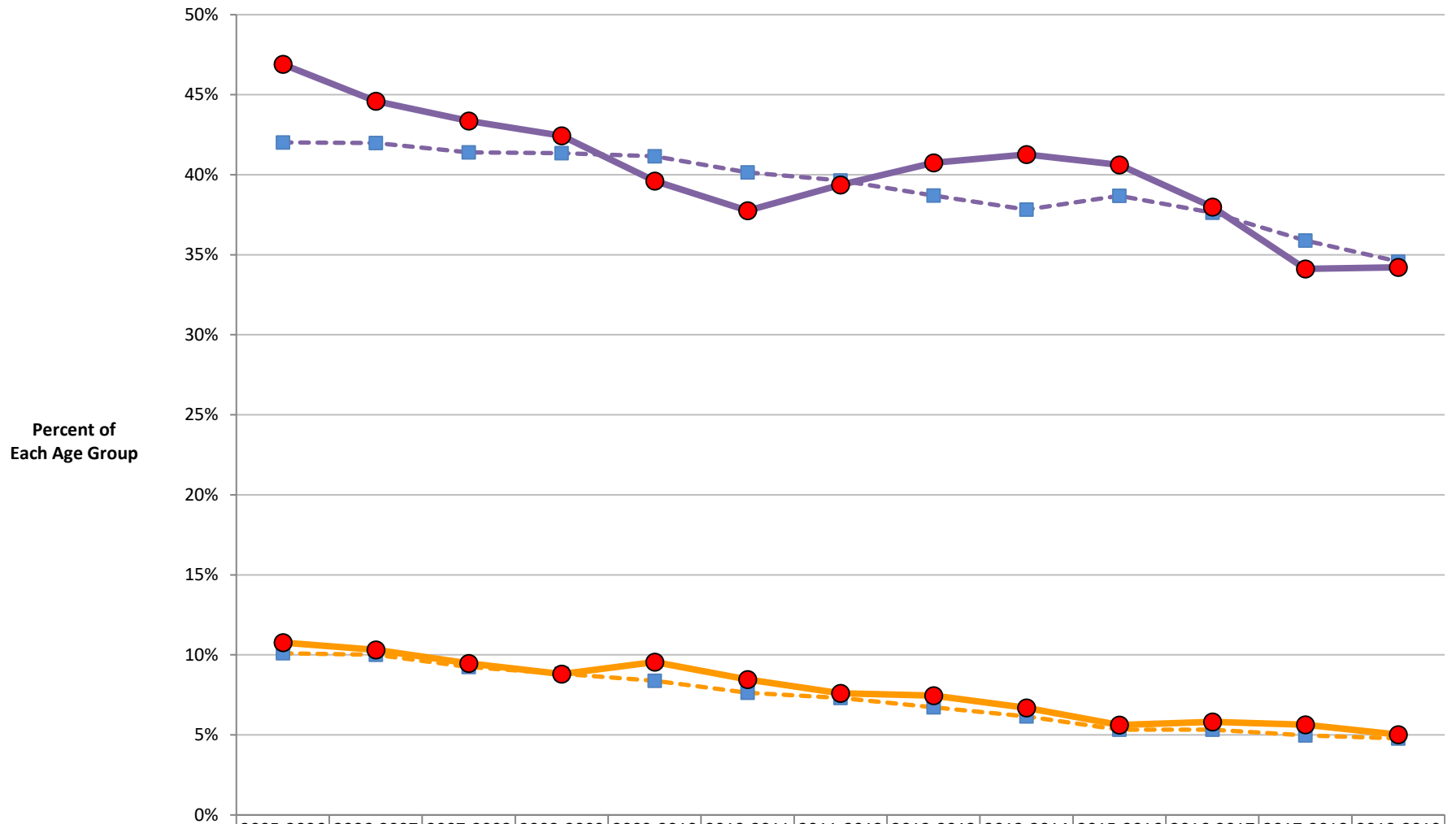


### Past Month Binge Alcohol Use among Missouri and U.S. Youth and Young Adults



	2005-2006	2006-2007	2007-2008	2008-2009	2009-2010	2010-2011	2011-2012	2012-2013	2013-2014	2015-2016	2016-2017	2017-2018	2018-2019
U.S. Ages 12-17	10.10%	10.00%	9.25%	8.82%	8.38%	7.63%	7.31%	6.73%	6.16%	5.33%	5.33%	4.97%	4.78%
Missouri Ages 12-17	10.77%	10.31%	9.47%	8.80%	9.55%	8.46%	7.60%	7.46%	6.70%	5.62%	5.82%	5.64%	5.02%
U.S. Ages 18-25	42.02%	41.99%	41.40%	41.35%	41.15%	40.15%	39.65%	38.70%	37.82%	38.69%	37.62%	35.89%	34.58%
Missouri Ages 18-25	46.90%	44.60%	43.37%	42.44%	39.61%	37.75%	39.37%	40.74%	41.27%	40.61%	37.98%	34.12%	34.22%

**Title** Past Month Binge Alcohol Use among Missouri and U.S. Youth and Young Adults

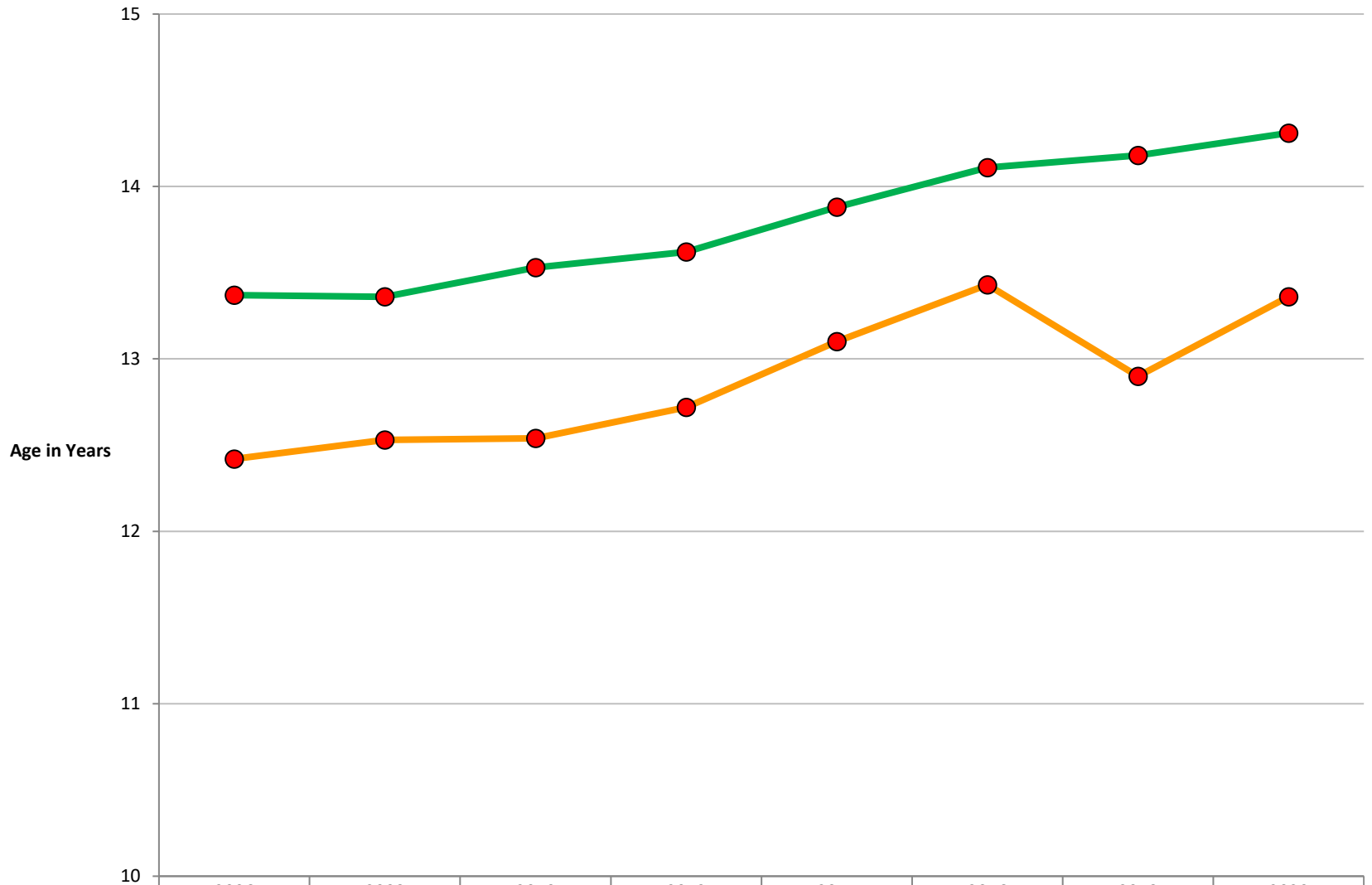
**Definition** 5 or more drinks on the same occasion on at least one day during the one-month period preceding the survey

**Methodology** Overlapping 2-year rate estimates from Missouri and U.S. survey samples for age groups 12-17 and 18-25

**Data Source** National Survey on Drug Use and Health, U.S. Department of Health and Human Services, Substance Abuse and Mental Health Services Administration

**Data Notes** Data are not available for combined years 2014-2015 because measure was not included in the 2015 NSDUH questionnaire.  
Apparent U.S. and Missouri differences in estimates, and year-to-year increases and decreases, might be statistically insignificant due to survey sampling.

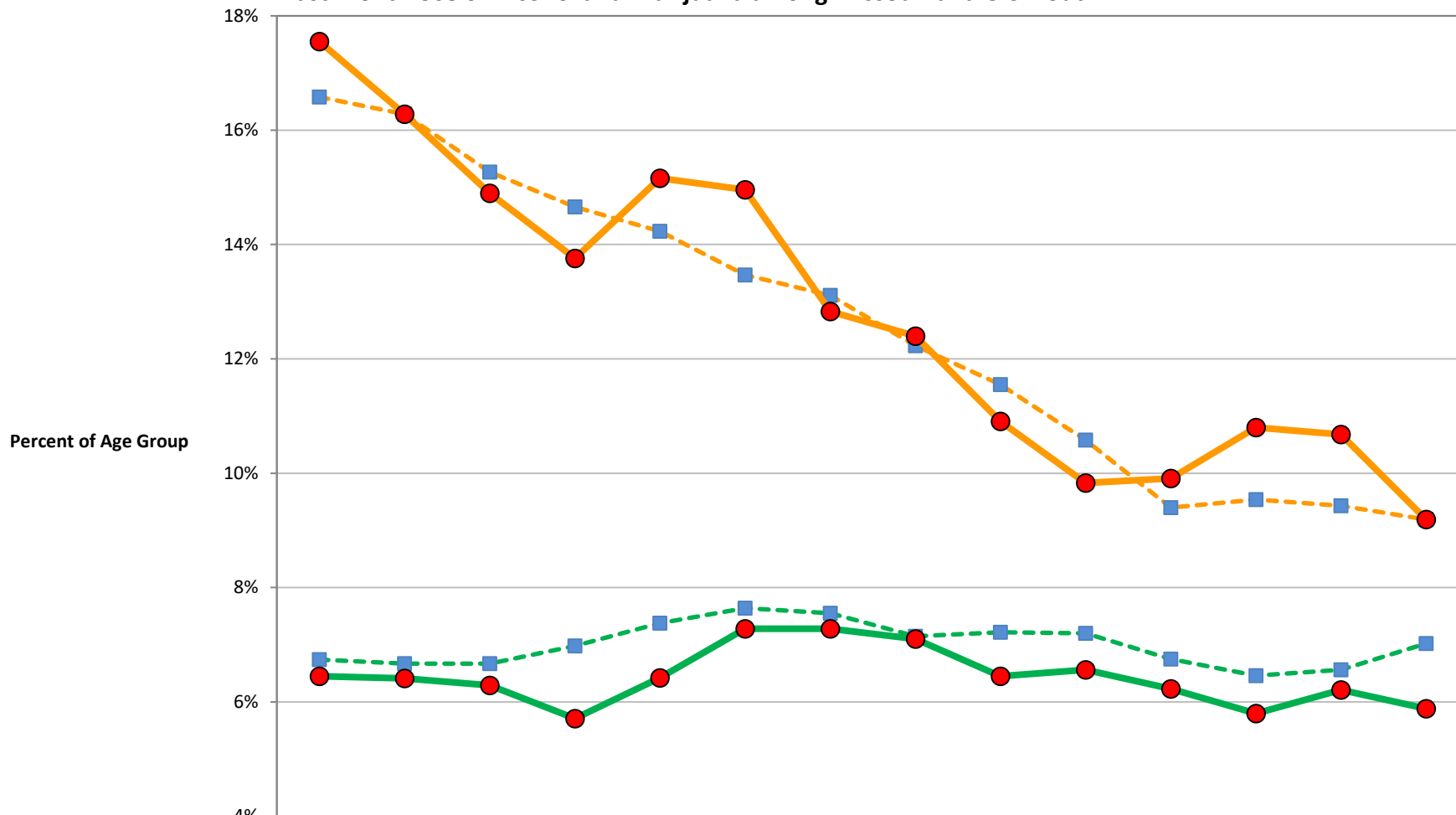
### Average Age of First Use of Alcohol and Marijuana among Missouri Youth



	2006	2008	2010	2012	2014	2016	2018	2020
Alcohol - Missouri Grades 6-12	12.42	12.53	12.54	12.72	13.10	13.43	12.90	13.36
Marijuana - Missouri Grades 6-12	13.37	13.36	13.53	13.62	13.88	14.11	14.18	14.31

**Title** Average Age of First Use of Alcohol and Marijuana among Missouri Youth  
**Definition** Among Missouri youth who have ever used alcohol or marijuana, average age of first-time use  
**Methodology** Biennial survey of Missouri secondary school students in grades 6-12.  
**Data Source** Missouri Student Survey, Missouri Institute of Mental Health & Missouri Department of Mental Health  
**Data Note** Apparent year-to-year changes in estimates might be statistically insignificant due to survey sampling.

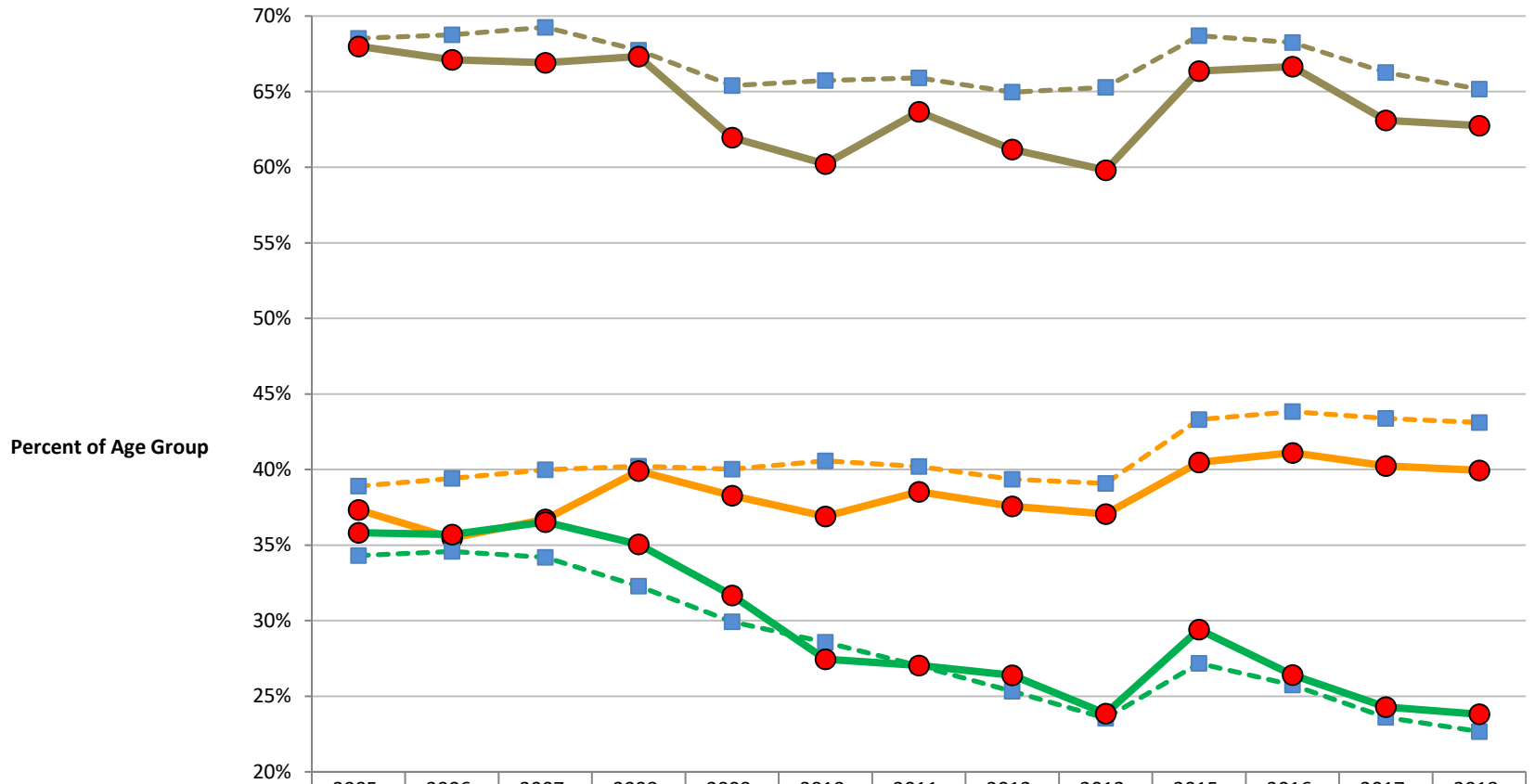
**Past Month Use of Alcohol and Marijuana among Missouri and U.S. Youth**



	2005-2006	2006-2007	2007-2008	2008-2009	2009-2010	2010-2011	2011-2012	2012-2013	2013-2014	2014-2015	2015-2016	2016-2017	2017-2018	2018-2019
Alcohol - U.S. Ages 12-17	16.58%	16.28%	15.27%	14.66%	14.23%	13.47%	13.11%	12.23%	11.55%	10.58%	9.40%	9.54%	9.43%	9.19%
Alcohol - Missouri Ages 12-17	17.55%	16.28%	14.90%	13.76%	15.16%	14.96%	12.83%	12.40%	10.91%	9.83%	9.91%	10.80%	10.68%	9.19%
Marijuana - U.S. Ages 12-17	6.74%	6.67%	6.67%	6.98%	7.38%	7.64%	7.55%	7.15%	7.22%	7.20%	6.75%	6.46%	6.56%	7.02%
Marijuana - Missouri Ages 12-17	6.45%	6.41%	6.29%	5.71%	6.42%	7.28%	7.28%	7.10%	6.45%	6.56%	6.23%	5.80%	6.21%	5.88%

**Title** Past Month Use of Alcohol and Marijuana among Missouri and U.S. Youth  
**Definition** Any use of alcohol or marijuana during the one-month period preceding the survey  
**Methodology** Overlapping 2-year rate estimates from Missouri and U.S. survey samples for age group 12-17  
**Data Source** National Survey on Drug Use and Health, U.S. Department of Health and Human Services, Substance Abuse and Mental Health Services Administration  
**Data Note** Apparent U.S. and Missouri differences in estimates, and year-to-year increases and decreases, might be statistically insignificant due to survey sampling.

## Missouri and U.S. Youth who Perceive Great Risk in Use of Alcohol, Tobacco, and Marijuana



	2005-2006	2006-2007	2007-2008	2008-2009	2009-2010	2010-2011	2011-2012	2012-2013	2013-2014	2015-2016	2016-2017	2017-2018	2018-2019
—■— Binge Alcohol Risk - U.S. Ages 12-17	38.90%	39.41%	39.98%	40.23%	40.02%	40.58%	40.21%	39.35%	39.09%	43.30%	43.83%	43.39%	43.11%
—●— Binge Alcohol Risk - Missouri Ages 12-17	37.33%	35.47%	36.70%	39.91%	38.27%	36.90%	38.53%	37.56%	37.05%	40.47%	41.11%	40.24%	39.95%
—■— Smoking Risk - U.S. Ages 12-17	68.52%	68.76%	69.26%	67.74%	65.41%	65.74%	65.92%	64.96%	65.28%	68.71%	68.24%	66.27%	65.16%
—●— Smoking Risk - Missouri Ages 12-17	68.00%	67.10%	66.91%	67.33%	61.97%	60.22%	63.67%	61.18%	59.81%	66.37%	66.65%	63.10%	62.74%
—■— Marijuana Risk - U.S. Ages 12-17	34.31%	34.58%	34.19%	32.28%	29.93%	28.58%	27.02%	25.34%	23.54%	27.17%	25.75%	23.61%	22.67%
—●— Marijuana Risk - Missouri Ages 12-17	35.83%	35.70%	36.53%	35.06%	31.67%	27.46%	27.05%	26.39%	23.86%	29.41%	26.41%	24.29%	23.81%

**Title** Missouri and U.S. Youth who Perceive Great Risk in Using Alcohol, Tobacco, and Marijuana

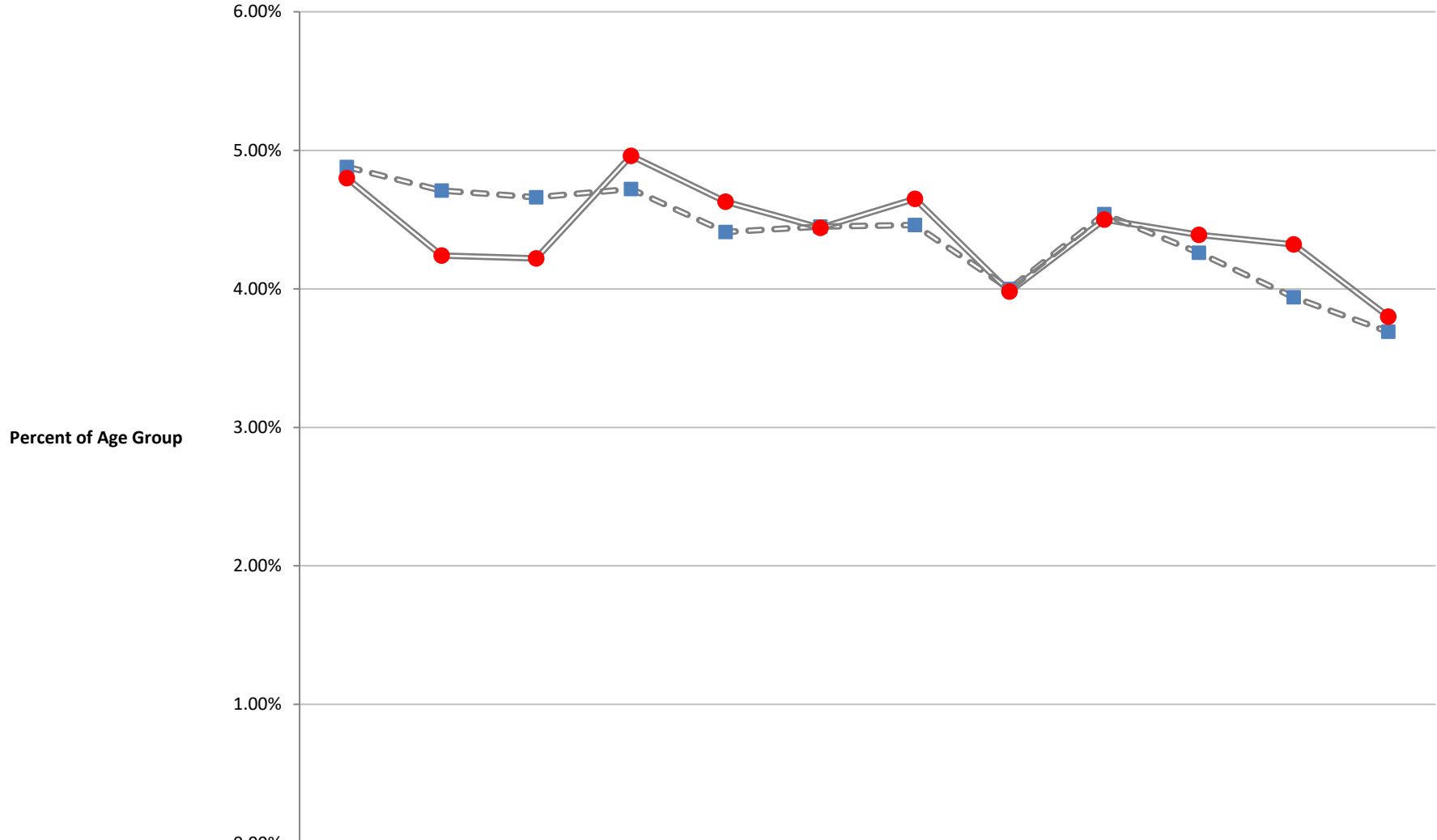
**Definitions** Perceptions of great risk in consuming five or more drinks of alcohol once or twice a week, smoking one or more packs of cigarettes per day, and smoking marijuana once a month

**Methodology** Overlapping 2-year rate estimates from Missouri and U.S. survey samples for age group 12-17

**Data Source** National Survey on Drug Use and Health, U.S. Department of Health and Human Services, Substance Abuse and Mental Health Services Administration

**Data Note** Data are not available for combined years 2014-2015 because measures were not included in the 2015 NSDUH questionnaire.  
Apparent U.S. and Missouri differences in estimates, and year-to-year increases and decreases, might be statistically insignificant due to survey sampling.

### Prescription Pain Reliever Misuse among Missouri and U.S. Adults



	2006-2007	2007-2008	2008-2009	2009-2010	2010-2011	2011-2012	2012-2013	2013-2014	2015-2016	2016-2017	2017-2018	2018-2019
Pain Relievers - U.S. Ages 18+	4.88%	4.71%	4.66%	4.72%	4.41%	4.45%	4.46%	4.00%	4.54%	4.26%	3.94%	3.69%
Pain Relievers - Missouri Ages 18+	4.80%	4.24%	4.22%	4.96%	4.63%	4.44%	4.65%	3.98%	4.50%	4.39%	4.32%	3.80%

**Title** Prescription Pain Reliever Misuse among Missouri and U.S. Adults

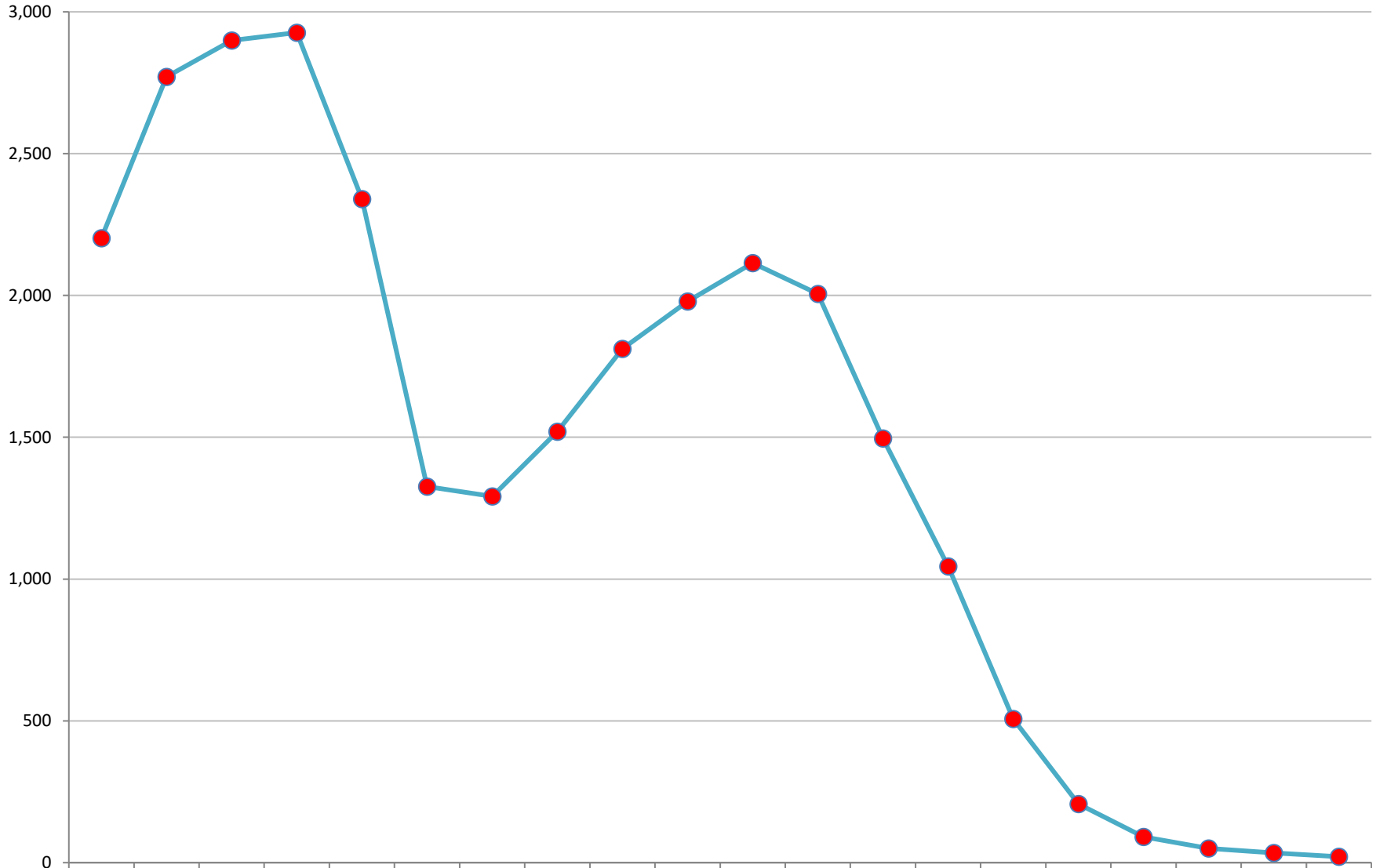
**Definition** Non-medical use of a pain reliever during the one-year period preceding the survey

**Methodology** Overlapping 2-year rate estimates from Missouri and U.S. survey samples for age group 18 and older

**Data Source** National Survey on Drug Use and Health, U.S. Department of Health and Human Services, Substance Abuse and Mental Health Services Administration

**Data Notes** Data are not available for combined years 2014-2015 because measure was not included in the 2015 NSDUH questionnaire.  
 Apparent U.S. and Missouri differences in estimates, and year-to-year increases and decreases, might be statistically insignificant due to survey sampling.

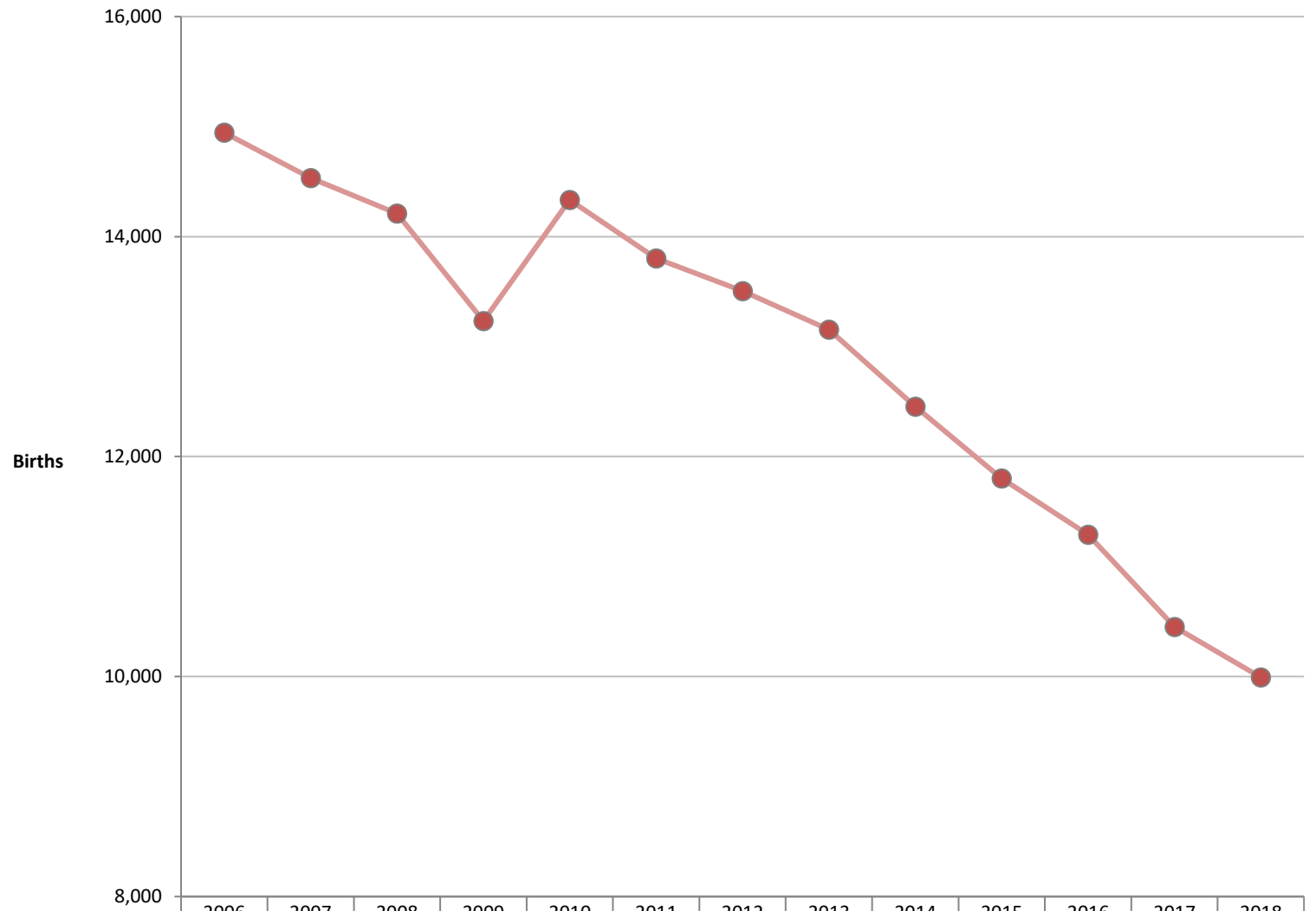
### Methamphetamine Lab Incidents in Missouri



	2001	2002	2003	2004	2005	2006	2007	2008	2009	2010	2011	2012	2013	2014	2015	2016	2017	2018	2019	2020
Missouri	2202	2771	2899	2927	2340	1326	1292	1520	1812	1979	2114	2006	1496	1045	507	207	91	50	34	21

**Title** Methamphetamine Lab Incidents in Missouri  
**Definition** Confiscation of methamphetamine labs, equipment, and dumpsites  
**Methodology** Counts of meth laboratories, chemical/equipment/glassware seizures, and dumpsites  
**Data Sources** U.S. Drug Enforcement Admin, El Paso Intelligence Center (EPIC) National Seizure System; & Missouri State Highway Patrol, Division of Drug and Crime Control  
**Data Note** Lab incident records for all years were re-queried and counts updated April 2015.

## Births to Missouri Women who Reported Smoking during Pregnancy



● Smoking During Pregnancy Reported	14945	14533	14211	13232	14335	13803	13506	13155	12454	11802	11290	10452	9993
-------------------------------------	-------	-------	-------	-------	-------	-------	-------	-------	-------	-------	-------	-------	------

Title	<b>Births to Missouri Women who Reported Smoking during Pregnancy</b>
Definition	<b>Number of births to Missouri women who reported smoking during their pregnancies</b>
Methodology	<b>Self-reports of cigarette smoking identified on the birth report long form</b>
Data Source	<b>Missouri Department of Health and Senior Services</b>